

**FOR YARDS  
BIG AND SMALL,  
THERE  
ARE  
GARDENS  
FOR ALL.**



## **Landscape Design 9,000 Sq. Ft.**

---

No matter the size of your yard or how much water you use, you can plant a garden that is water-wise, requires less than the 16,000 gallon outdoor allowance, and best of all, is super gorgeous.

Choose the design that is right for you.

We have several sketches (thank you talented artists!) and water-wise plant lists for different sized yards and water requirements, so you can find one that suits your situation. We think you'll love trying these as much as you love saving water.

For more ideas on how to transform your yard into a water-wise paradise download a free, H2Overhaul Kit at [ThorntonWater.com/H2Overhaul](https://ThorntonWater.com/H2Overhaul).

**WITHOUT WATER** *life would be* **PRETTY DRY**

**THORNTONWATER.COM**



# 9,000 Sq. Ft. Option A

## Low-Water Plant Suggestions

Select your plant species based on your site's soil, sun exposure and water condition as well as your desired plant size, shape, color and texture. Plant suggestions are developed by the City of Thornton and Colorado State University.



### Deciduous Ornamental Trees

Acer glabrum	Rocky Mountain Maple
Acer tataricum	Tatarian Maple
Quercus alba x robur	Crimson Spire Oak

### Deciduous Shade Trees

Quercus muehlenbergii	Chinkapin Oak
Quercus robur	English Oak
Quercus robur	English Oak

### Medium Evergreen Trees

Picea glauca var. densata	Black Hills Spruce
Pinus cembra	Swiss Stone Pine

### Medium Deciduous Shrubs

Amorpha canescens	Leadplant
Spiraea thunbergii 'Ogon'	Mellow Yellow Spirea
Prunus besseyi	Western Sandcherry

### Large Deciduous Shrubs

Amelanchier alnifolia	Serviceberry
Cotoneaster lucidus	Peking Cotoneaster
Rhus trilobata	Three Leaf Sumac

### Medium Evergreen Shrubs

Hesperaloe parviflora	False Red Yucca
Juniperus chinensis	Chinese Juniper
Pinus Mugo	Mugo Pine

### Large Evergreen Shrub

Juniperus virginiana	Eastern Red-cedar
----------------------	-------------------

### Perennials

Artemisia frigida	Fringed Sage
Dalea purpurea	Purple Prairie Clover
Helianthus pumilus	Bush Sunflower
Oenothera caespitosa	White-tufted Evening-Primrose
Mentzelia decapetala	Star Flower/Blazing-Star
Ratibida columnifera	Prairie Coneflower
Rudbeckia hirta	Black Eyed Susan

### Groundcover

Callirhoe involucrata	Wine Cups
"Rhus trilobata 'Gro-Low' (R. aromatica 'Gro-Low')"	Gro-Low Fragrant Sumac
Euonymus fortunei 'Coloratus'	Wintercreeper
Wintercreeper	

### Additional Resources

City of Thornton Plant Database: <https://www.thorntonwater.com/resources.html>

Colorado State University Yard and Garden Low-Water Recommendations: <http://extension.colostate.edu/topic-areas/yard-garden/>

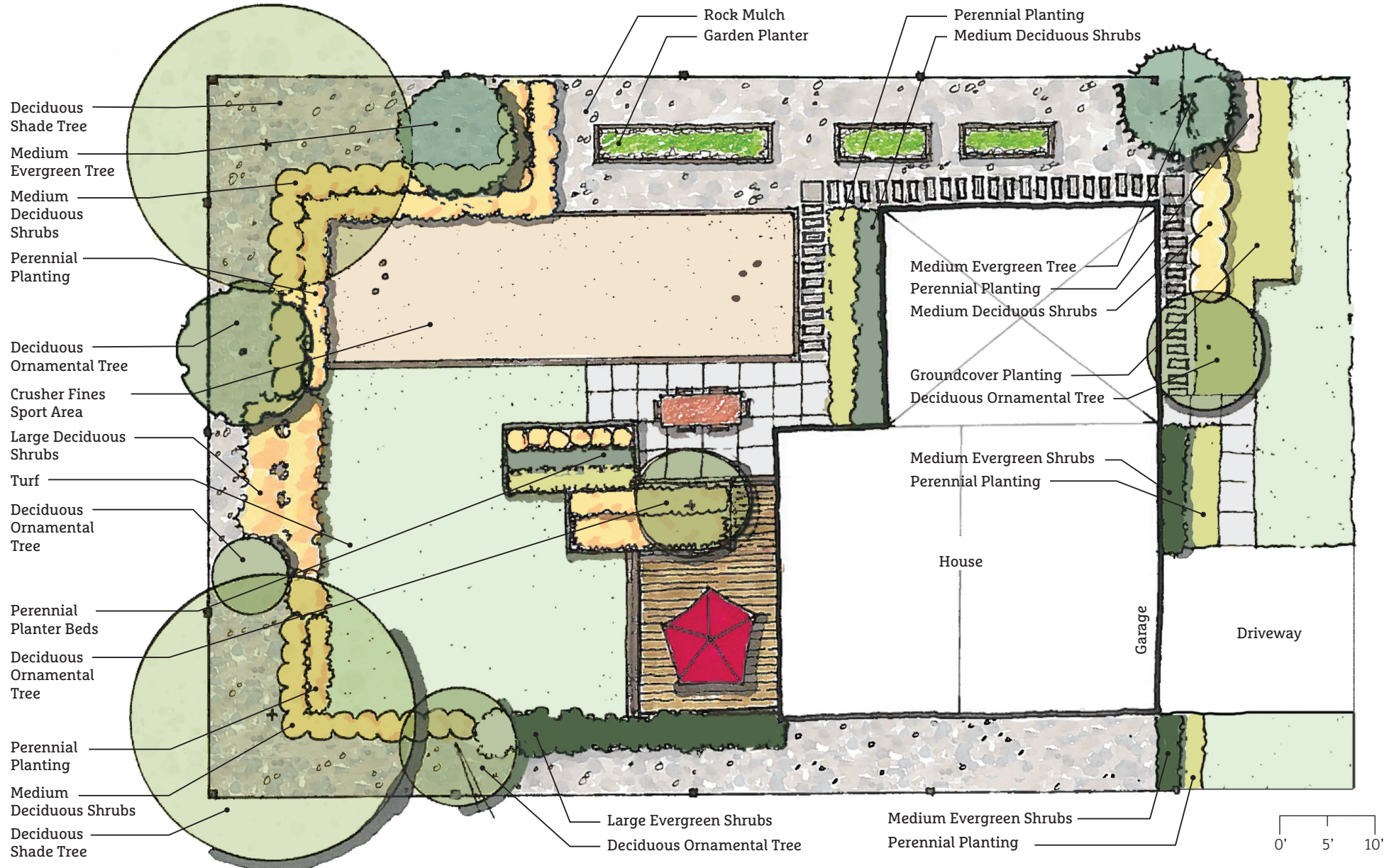
# 9,000 Sq. Ft. Option A (overhead view)

Monthly Landscape Water Requirement\* - 10,525 gal/month

\*Based on peak watering month



Lot Size	9,000 sq. ft.
Turf Area	1,505 sq. ft.
Groundcover Area	2,160 sq. ft.
July Water Budget	10,525 sq. ft.
Annual Water Budget	48,575 gal.





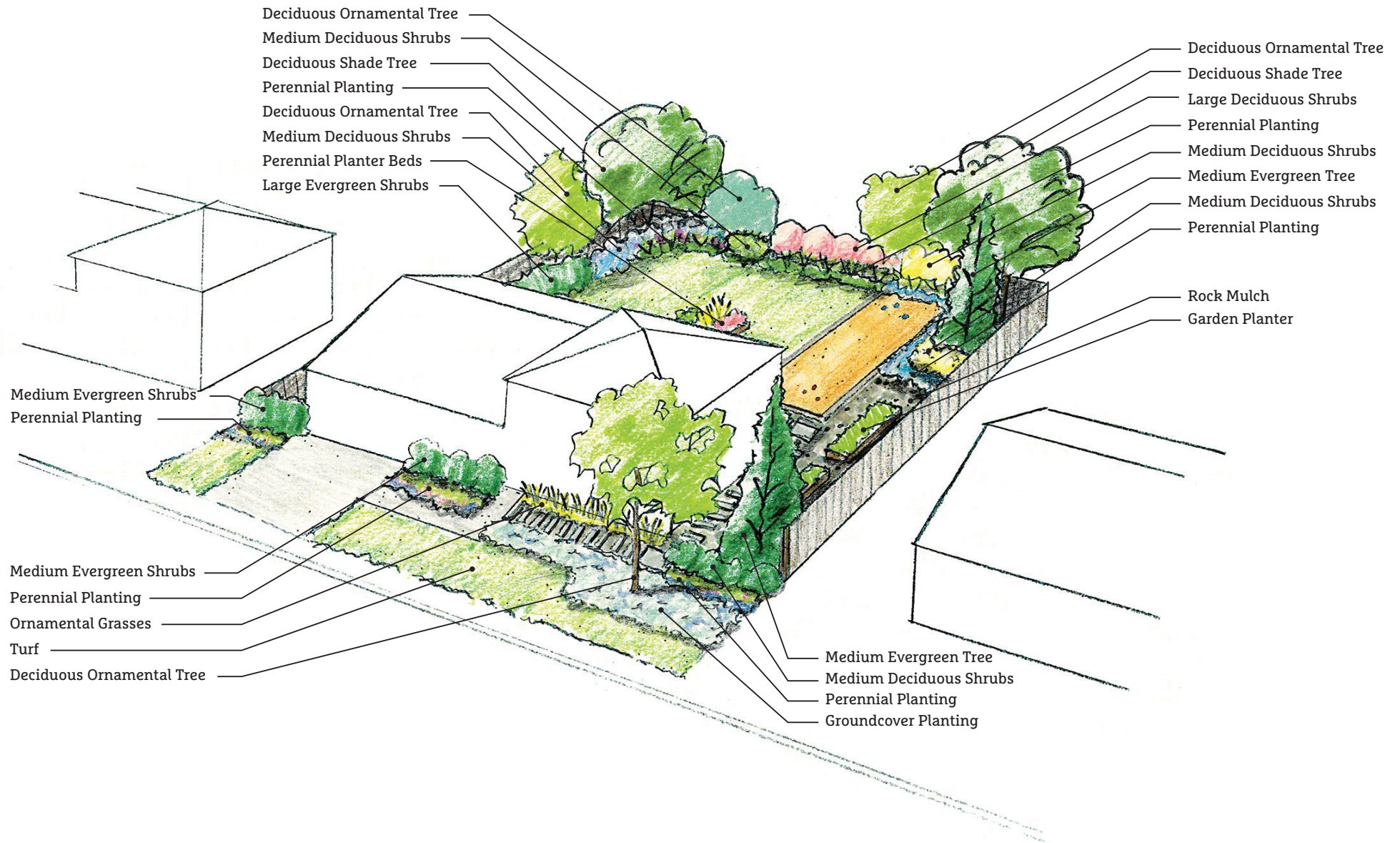
## 9,000 Sq. Ft. Option A (3D view)

Monthly Landscape Water Requirement\* - 10,525 gal/month

*\*Based on peak watering month*



Lot Size	9,000 sq. ft.
Turf Area	1,505 sq. ft.
Groundcover Area	2,160 sq. ft.
July Water Budget	10,525 sq. ft.
Annual Water Budget	48,575 gal.



# 9,000 Sq. Ft. Option B

## Low-Water Plant Suggestions

Select your plant species based on your site's soil, sun exposure and water condition as well as your desired plant size, shape, color and texture. Plant suggestions are developed by the City of Thornton and Colorado State University.



### Deciduous Ornamental Trees

Acer glabrum	Rocky Mountain Maple
Koelreuteria paniculata	Goldenrain Tree
Prunus virginiana	Native Choke Cherry

### Deciduous Shade Trees

Quercus muehlenbergii	Chinkapin Oak
Quercus robur	English Oak

### Small Evergreen Trees

Juniperus scopulorum	Rocky Mountain Juniper
Pinus heldreichii	Bosnian Pine

### Medium Evergreen Tree

Picea glauca var. densata	Black Hills Spruce
Picea glauca 'Pendula'	Weeping White Spruce

### Medium Deciduous Shrubs

Physocarpus opulifolius	Common Ninebark
Spiraea thunbergii 'Ogon'	Mellow Yellow Spirea
Fallugia paradoxa	Apache Plume
Spiraea thunbergii 'Ogon'	Mellow Yellow Spirea

### Large Deciduous Shrubs

Amelanchier alnifolia	Serviceberry
Cotoneaster lucidus	Peking Cotoneaster
Rhus trilobata	Three Leaf Sumac

### Medium Evergreen Shrubs

Artemesia tridentata	Western Sage
Hesperaloe parviflora	False Red Yucca
Juniperus chinensis	Chinese Juniper
Pinus Mugo	Mugo Pine

### Large Evergreen Shrub

Juniperus virginiana	Eastern Red-cedar
----------------------	-------------------

### Small Ornamental Grasses

Bouteloua gracilis	Blue Grama
Festuca glauca	Blue Fescue
Pennisetum alopecuroides	Dwarf Fountain Grass

### Perennials

Artemisia frigida	Fringed Sage
Dalea purpurea	Purple Prairie Clover
Helianthus pumilus	Bush Sunflower
Oenothera caespitosa	White-tufted Evening-Primrose
Mentzelia decapetala	Star Flower/Blazing-Star
Ratibida columnifera	Prairie Coneflower
Rudbeckia hirta	Black Eyed Susan

### Groundcovers

Erigeron divergens	Spreading Daisy
Eriogonum umbellatum	Sulphur Flower
"Rhus trilobata 'Gro-Low' (R. aromatica 'Gro-Low')"	Gro-Low Fragrant Sumac
Euonymus fortunei 'Coloratus'	Wintercreeper
Wintercreeper	

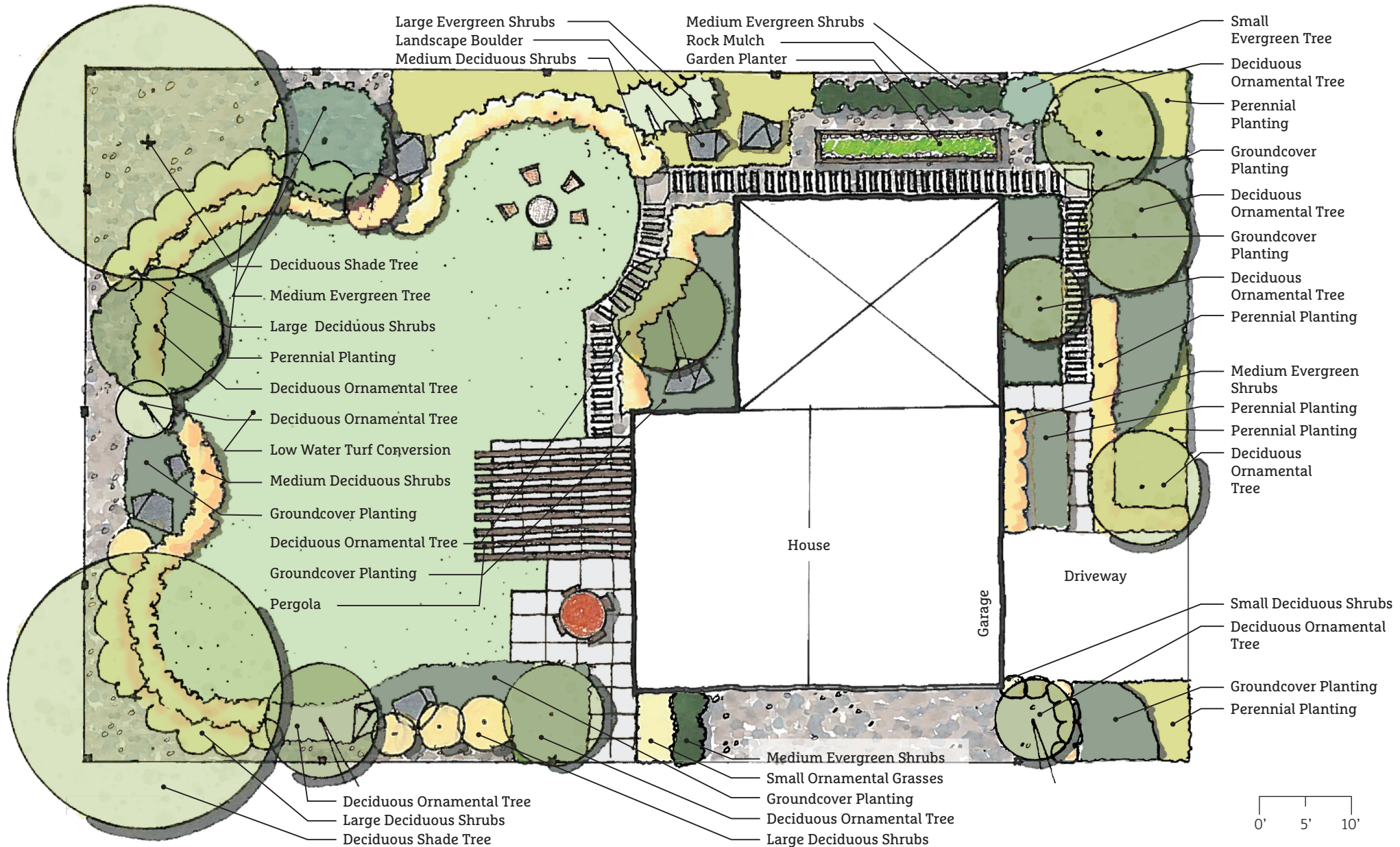
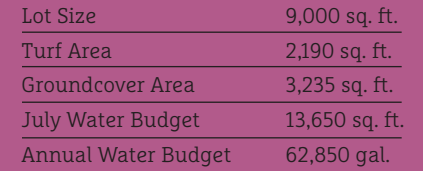
### Additional Resources

City of Thornton Plant Database: <https://www.thorntonwater.com/resources.html>

Colorado State University Yard and Garden Low-Water Recommendations: <http://extension.colostate.edu/topic-areas/yard-garden/>



*\*Based on peak watering month*



## 9,000 Sq. Ft. Option B (3D view)

Monthly Landscape Water Requirement\* - 13,650 gal/month

*\*Based on peak watering month*



Lot Size	9,000 sq. ft.
Turf Area	2,190 sq. ft.
Groundcover Area	3,235 sq. ft.
July Water Budget	13,650 sq. ft.
Annual Water Budget	62,850 gal.

