

**FOR YARDS  
BIG AND SMALL,  
THERE  
ARE  
GARDENS  
FOR ALL.**



## **Landscape Design 7,000 Sq. Ft.**

---

No matter the size of your yard or how much water you use, you can plant a garden that is water-wise, requires less than the 16,000 gallon outdoor allowance, and best of all, is super gorgeous.

Choose the design that is right for you.

We have several sketches (thank you talented artists!) and water-wise plant lists for different sized yards and water requirements, so you can find one that suits your situation. We think you'll love trying these as much as you love saving water.

For more ideas on how to transform your yard into a water-wise paradise download a free, H2Overhaul Kit at [ThorntonWater.com/H2Overhaul](http://ThorntonWater.com/H2Overhaul).

**WITHOUT WATER** *life would be* **PRETTY DRY**

**THORNTONWATER.COM**



# 7,000 Sq. Ft. Option A

## Low-Water Plant Suggestions

Select your plant species based on your site's soil, sun exposure and water condition as well as your desired plant size, shape, color and texture. Plant suggestions are developed by the City of Thornton and Colorado State University.



### Deciduous Ornamental Trees

Acer glabrum	Rocky Mountain Maple
Prunus virginiana	Native Choke Cherry
Quercus alba x robur	Crimson Spire Oak

### Deciduous Shade Trees

Quercus muehlenbergii	Chinkapin Oak
Quercus robur	English Oak

### Medium Evergreen Trees

Pinus aristata	Bristlecone Pine
Pinus cembra	Swiss Stone Pine

### Medium Deciduous Shrubs

Fallugia paradoxa	Apache Plume
Spiraea thunbergii 'Ogon'	Mellow Yellow Spirea

### Large Deciduous Shrubs

Amelanchier alnifolia	Serviceberry
Rhus glabra	Smooth Sumac

### Medium Evergreen Shrubs

Juniperus chinensis	Chinese Juniper
Mahonia aquifolium	Oregon Grape Holly
Pinus Mugo	Mugo Pine
Large Evergreen Shrub	
Juniperus virginiana	Eastern Red-cedar

### Perennials

Artemisia frigida	Fringed Sage
Dalea purpurea	Purple Prairie Clover
Helianthus pumilus	Bush Sunflower
Oenothera caespitosa	White-tufted Evening-Primrose
Mentzelia decapetala	Star Flower/Blazing-Star
Ratibida columnifera	Prairie Coneflower
Rudbeckia hirta	Black Eyed Susan

### Additional Resources

City of Thornton Plant Database: <https://www.thorntonwater.com/resources.html>

Colorado State University Yard and Garden Low-Water Recommendations: <http://extension.colostate.edu/topic-areas/yard-garden/>

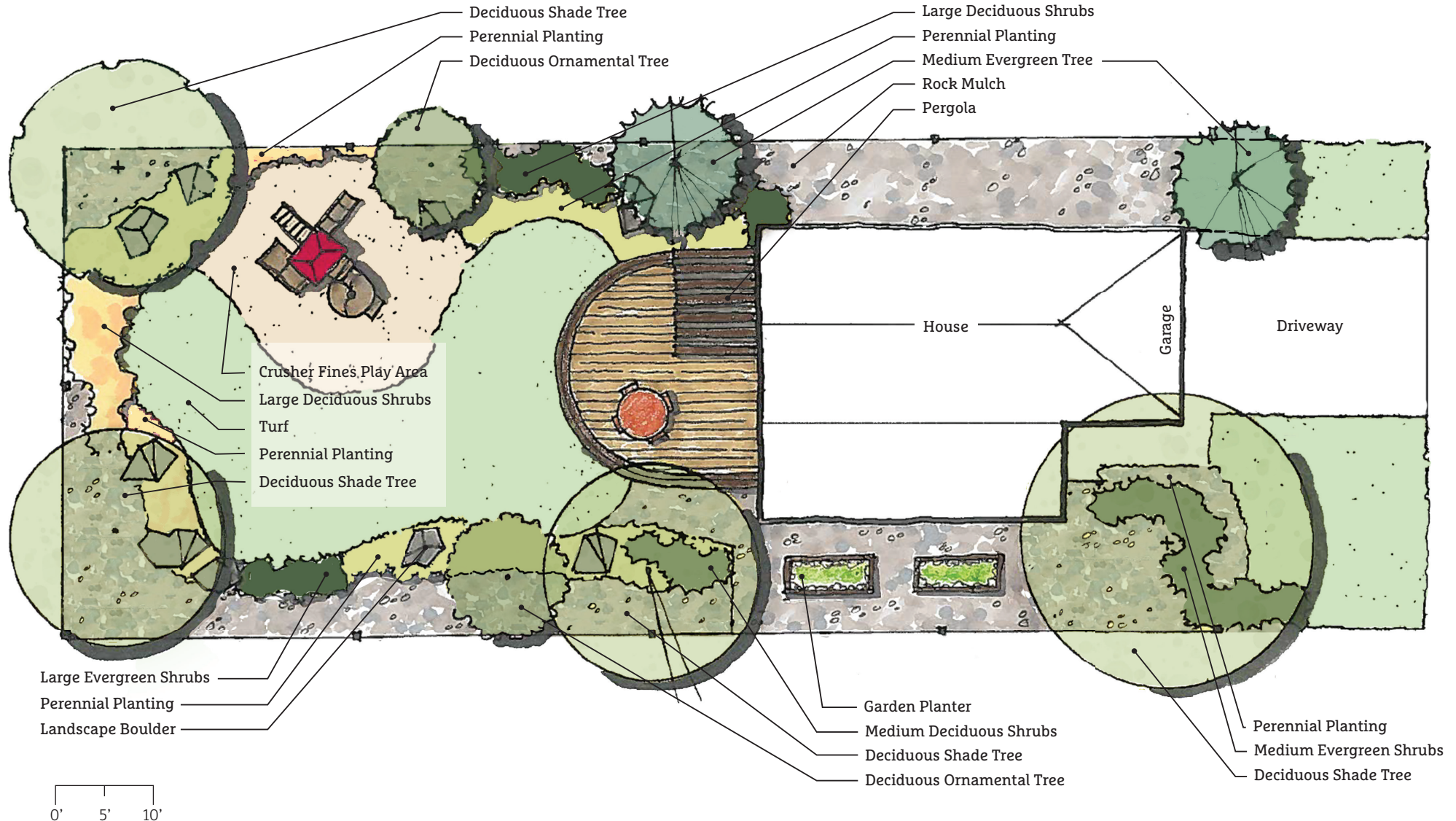
# 7,000 Sq. Ft. Option A (overhead view)

Monthly Landscape Water Requirement\* - 11,825 gal/month

*\*Based on peak watering month*



Lot Size	7,000 sq. ft.
Turf Area	1,950 sq. ft.
Groundcover Area	1,300 sq. ft.
July Water Budget	11,825 sq. ft.
Annual Water Budget	54,650 gal.



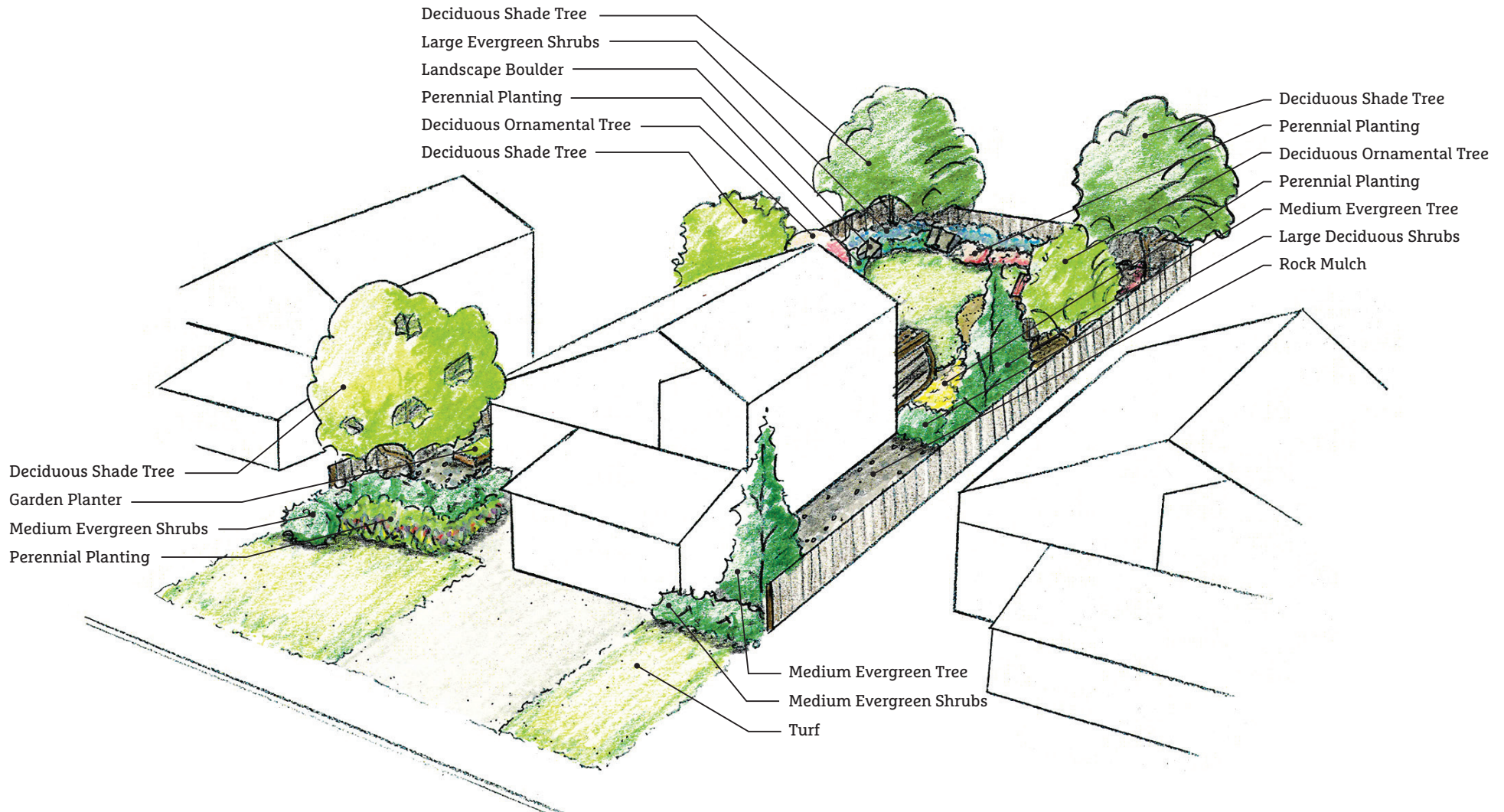
## 7,000 Sq. Ft. Option A (3D view)

Monthly Landscape Water Requirement\* - 11,825 gal/month

*\*Based on peak watering month*



Lot Size	7,000 sq. ft.
Turf Area	1,950 sq. ft.
Groundcover Area	1,300 sq. ft.
July Water Budget	11,825 sq. ft.
Annual Water Budget	54,650 gal.





## 7,000 Sq. Ft. Option B

### Low-Water Plant Suggestions

Select your plant species based on your site's soil, sun exposure and water condition as well as your desired plant size, shape, color and texture. Plant suggestions are developed by the City of Thornton and Colorado State University.



#### Deciduous Ornamental Trees

Koeleruteria paniculata	Goldenrain Tree
Quercus alba x robur	Crimson Spire Oak

#### Deciduous Shade Trees

Quercus muehlenbergii	Chinkapin Oak
Gleditsia triancanthos inermis	Thornless Honeylocust
Quercus robur	English Oak

#### Medium Deciduous Shrubs

Spiraea thunbergii 'Ogon'	Mellow Yellow Spirea
Prunus besseyi	Western Sandcherry

#### Large Deciduous Shrubs

Amelanchier alnifolia	Serviceberry
Cotoneaster lucidus	Peking Cotoneaster

#### Medium Evergreen Shrubs

Juniperus chinensis	Chinese Juniper
Pinus Mugo	Mugo Pine

#### Medium Ornamental Grasses

Calamagrostis acutiflora	Feather Reed Grass
Muhlenbergia reverchonii 'Undaunted'	Undaunted Ruby Muhly Grass
Schizachyrium scoparium	Little Bluestem

#### Perennials

Artemisia frigida	Fringed Sage
Dalea purpurea	Purple Prairie Clover
Helianthus pumilus	Bush Sunflower
Oenothera caespitosa	White-tufted Evening-Primrose
Mentzelia decapetala	Star Flower/Blazing-Star
Ratibida columnifera	Prairie Coneflower
Rudbeckia hirta	Black Eyed Susan

#### Groundcover

"Rhus trilobata 'Gro-Low' (R. aromatica 'Gro-Low')"	Gro-Low Fragrant Sumac
Euonymus fortunei 'Coloratus' Wintercreeper	Wintercreeper

#### Additional Resources

City of Thornton Plant Database: <https://www.thorntonwater.com/resources.html>

Colorado State University Yard and Garden Low-Water Recommendations: <http://extension.colostate.edu/topic-areas/yard-garden/>

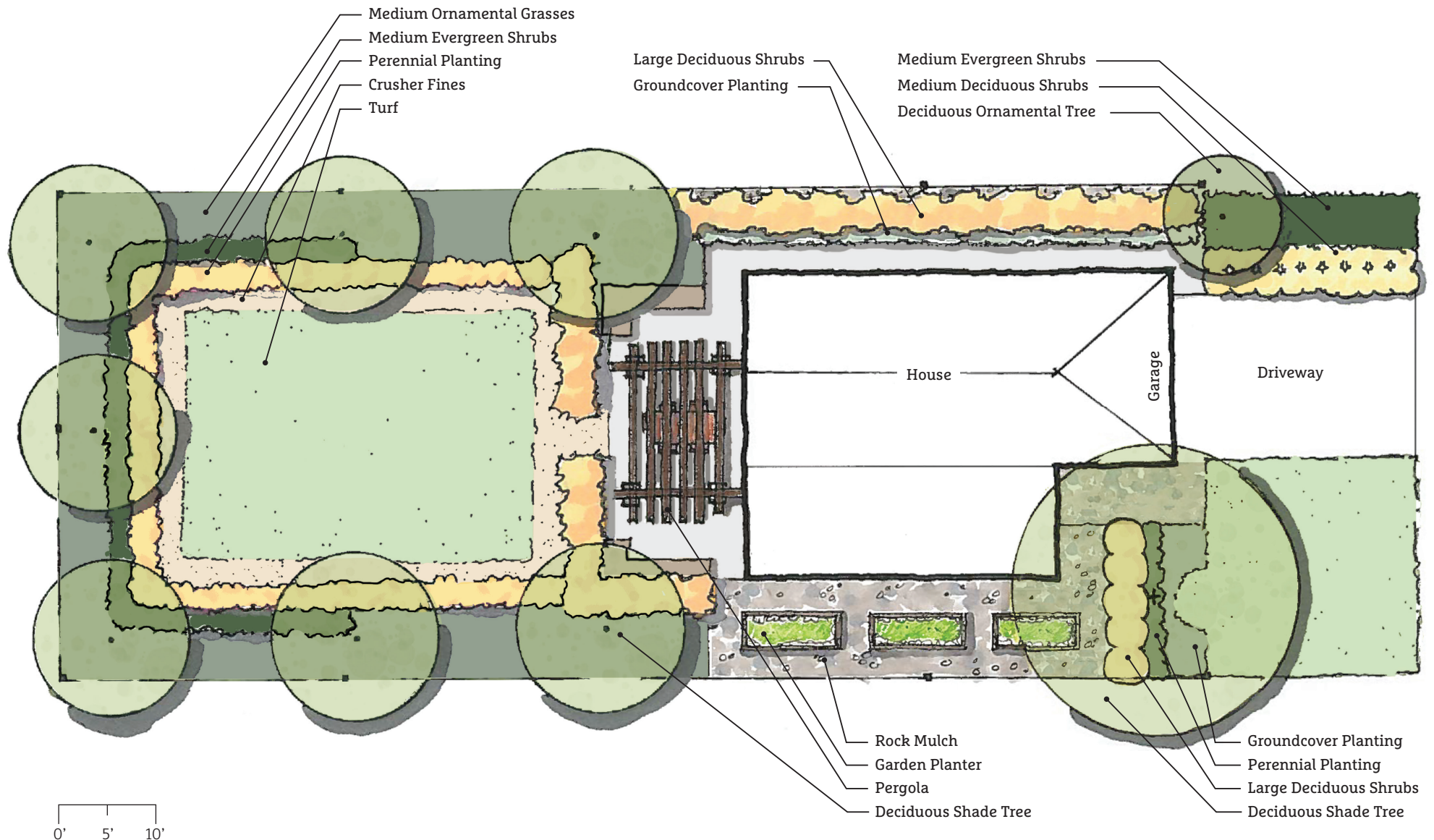
# 7,000 Sq. Ft. Option B (overhead view)

Monthly Landscape Water Requirement\* - 13,350 gal/month

*\*Based on peak watering month*



Lot Size	7,000 sq. ft.
Turf Area	1,385 sq. ft.
Groundcover Area	2,545 sq. ft.
July Water Budget	10,350 sq. ft.
Annual Water Budget	47,750 gal.



## 7,000 Sq. Ft. Option B (3D view)

Monthly Landscape Water Requirement\* - 13,350 gal/month

*\*Based on peak watering month*



Lot Size	7,000 sq. ft.
Turf Area	1,385 sq. ft.
Groundcover Area	2,545 sq. ft.
July Water Budget	10,350 sq. ft.
Annual Water Budget	47,750 gal.

