

**FOR YARDS
BIG AND SMALL,
THERE
ARE
GARDENS
FOR ALL.**



Landscape Design 4,000 Sq. Ft.

No matter the size of your yard or how much water you use, you can plant a garden that is water-wise, requires less than the 16,000 gallon outdoor allowance, and best of all, is super gorgeous.

Choose the design that is right for you.

We have several sketches (thank you talented artists!) and water-wise plant lists for different sized yards and water requirements, so you can find one that suits your situation. We think you'll love trying these as much as you love saving water.

For more ideas on how to transform your yard into a water-wise paradise download a free, H2Overhaul Kit at ThorntonWater.com/H2Overhaul.

WITHOUT WATER *life would be* **PRETTY DRY**

THORNTONWATER.COM



4,000 Sq. Ft. Option A

Low-Water Plant Suggestions

Select your plant species based on your site's soil, sun exposure and water condition as well as your desired plant size, shape, color and texture. Plant suggestions are developed by the City of Thornton and Colorado State University.



Deciduous Ornamental Trees

Acer glabrum	Rocky Mountain Maple
Prunus virginiana	Native Choke Cherry

Deciduous Shade Trees

Quercus muehlenbergii	Chinkapin Oak
Pyrus ussuriensis	Ussurain Pear

Small Evergreen Trees

Juniperus scopulorum	Rocky Mountain Juniper
Pinus heldreichii	Bosnian Pine

Medium Deciduous Shrubs

Physocarpus opulifolius	Common Ninebark
Spiraea thunbergii 'Ogon'	Mellow Yellow Spirea

Medium Evergreen Shrubs

Juniperus chinensis	Chinese Juniper
---------------------	-----------------

Medium Ornamental Grasses

Muhlenbergia reverchonii 'Undaunted'	Undaunted Ruby Muhly Grass
Panicum virgatum	Switchgrass

Perennials

Artemisia frigida	Fringed Sage
Dalea purpurea	Purple Prairie Clover
Oenothera caespitosa	White-tufted Evening-Primrose
Mentzelia decapetala	Star Flower/Blazing-Star
Ratibida columnifera	Prairie Coneflower
Rudbeckia hirta	Black Eyed Susan

Groundcovers

Callirhoe involucrata	Wine Cups
Erigeron divergens	Spreading Daisy

Additional Resources

City of Thornton Plant Database: <https://www.thorntonwater.com/resources.html>

Colorado State University Yard and Garden Low-Water Recommendations: <http://extension.colostate.edu/topic-areas/yard-garden/>

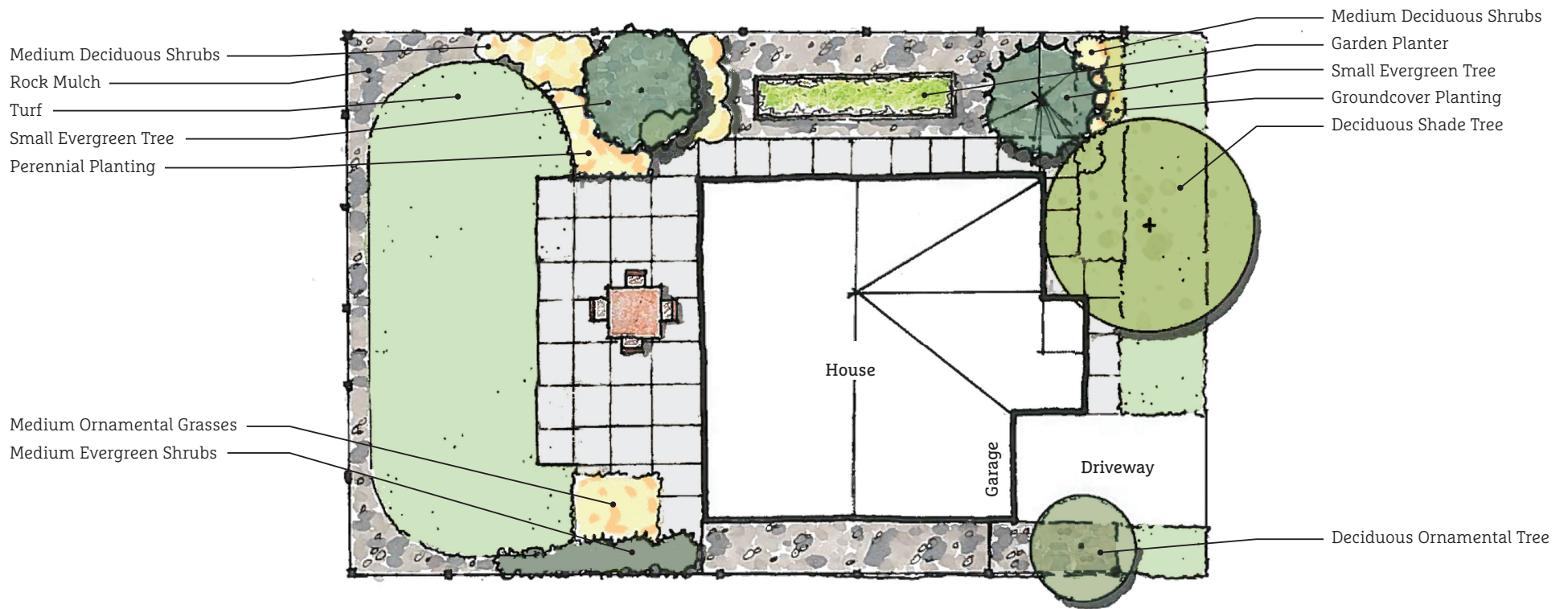
4,000 Sq. Ft. Option A (overhead view)

Monthly Landscape Water Requirement* - 6,375 gal/month

**Based on peak watering month*



Lot Size	4,000 sq. ft.
Turf Area	1,100 sq. ft.
Groundcover Area	480 sq. ft.
July Water Budget	6,375 sq. ft.
Annual Water Budget	29,475 gal.



0' 5' 10'

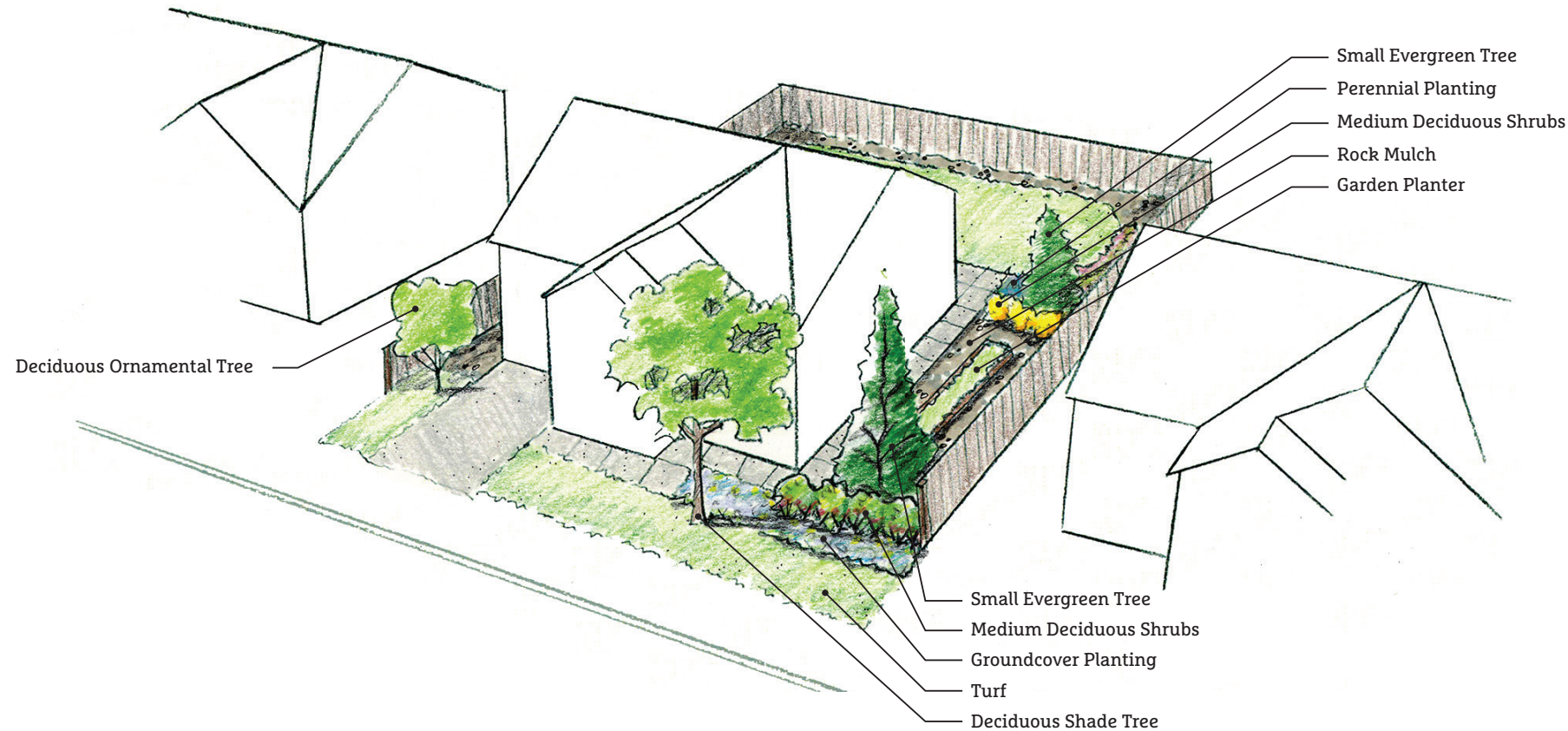
4,000 Sq. Ft. Option A (3D view)

Monthly Landscape Water Requirement* - 6,375 gal/month

**Based on peak watering month*



Lot Size	4,000 sq. ft.
Turf Area	1,100 sq. ft.
Groundcover Area	480 sq. ft.
July Water Budget	6,375 sq. ft.
Annual Water Budget	29,475 gal.



4,000 Sq. Ft. Option B

Low-Water Plant Suggestions

Select your plant species based on your site's soil, sun exposure and water condition as well as your desired plant size, shape, color and texture. Plant suggestions are developed by the City of Thornton and Colorado State University.



Deciduous Ornamental Trees

Acer glabrum	Rocky Mountain Maple
Koeleruteria paniculata	Goldenrain Tree
Quercus alba x robur	Crimson Spire Oak

Deciduous Shade Trees

Quercus muehlenbergii	Chinkapin Oak
Quercus robur	English Oak
Pyrus ussuriensis	Ussurain Pear

Small Evergreen Trees

Juniperus scopulorum	Rocky Mountain Juniper
Pinus heldreichii	Bosnian Pine

Medium Deciduous Shrubs

Physocarpus opulifolius	Common Ninebark
Spiraea thunbergii 'Ogon'	Mellow Yellow Spirea
Fallugia paradoxa	Apache Plume
Spiraea thunbergii 'Ogon'	Mellow Yellow Spirea

Small Evergreen Shrubs

Juniperus horizontalis	Creeping Juniper
Mahonia aquifolium 'Compacta'	Compact Oregon Grape Holly

Medium Evergreen Shrubs

Juniperus chinensis	Chinese Juniper
Mahonia aquifolium	Oregon Grape Holly
Pinus Mugo	Mugo Pine

Small Ornamental Grasses

Bouteloua gracilis	Blue Grama
Festuca glauca	Blue Fescue

Medium Ornamental Grasses

Panicum virgatum	Switchgrass
Schizachyrium scoparium	Little Bluestem

Perennials

Artemisia frigida	Fringed Sage
Dalea purpurea	Purple Prairie Clover
Helianthus pumilus	Bush Sunflower
Oenothera caespitosa	White-tufted Evening-Primrose
Mentzelia decapetala	Star Flower/Blazing-Star
Ratibida columnifera	Prairie Coneflower
Rudbeckia hirta	Black Eyed Susan

Groundcovers

Erigeron divergens	Spreading Daisy
Eriogonum umbellatum	Sulphur Flower
Euonymus fortunei 'Coloratus'	Wintercreeper
Wintercreeper	

Additional Resources

City of Thornton Plant Database: <https://www.thorntonwater.com/resources.html>

Colorado State University Yard and Garden Low-Water Recommendations: <http://extension.colostate.edu/topic-areas/yard-garden/>

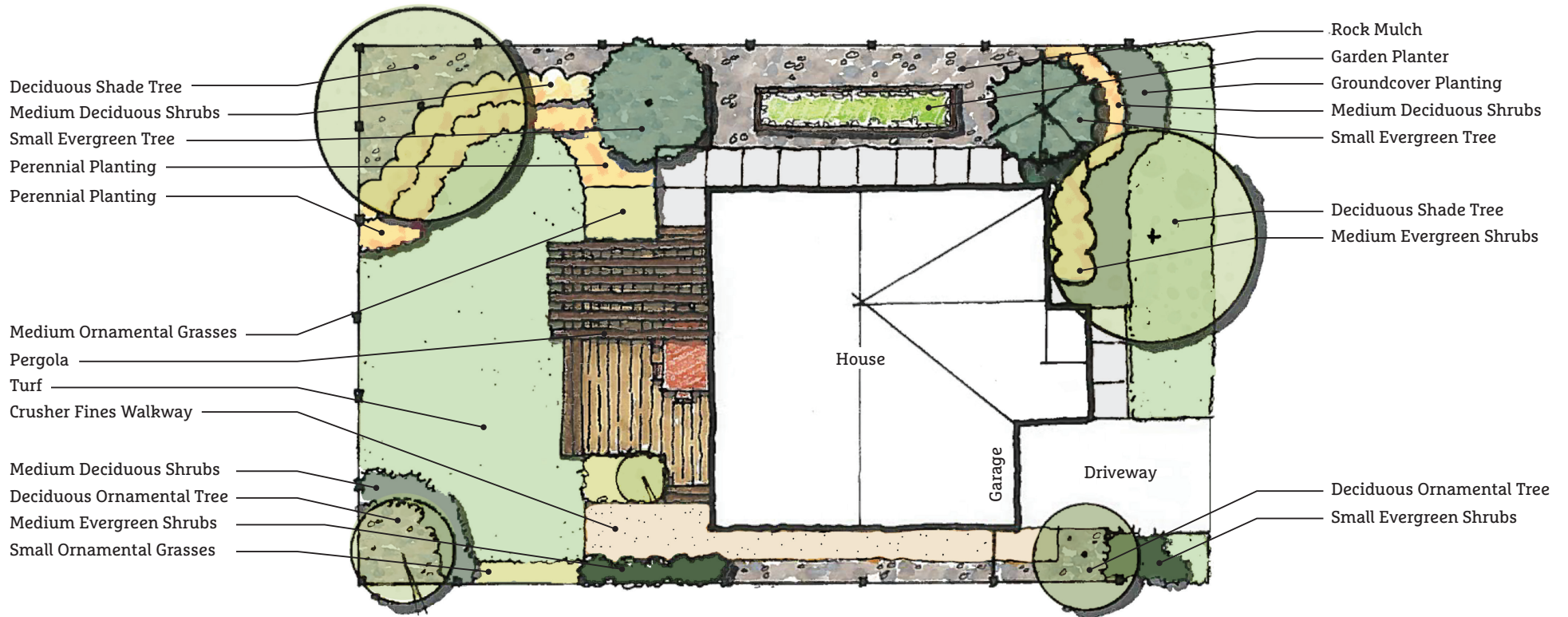
4,000 Sq. Ft. Option B (overhead view)

Monthly Landscape Water Requirement* - 6,375 gal/month

**Based on peak watering month*



Lot Size	4,000 sq. ft.
Turf Area	900 sq. ft.
Groundcover Area	880 sq. ft.
July Water Budget	5,800 sq. ft.
Annual Water Budget	26,800 gal.



0' 5' 10'

4,000 Sq. Ft. Option B (3D view)

Monthly Landscape Water Requirement* - 6,375 gal/month

**Based on peak watering month*



Lot Size	4,000 sq. ft.
Turf Area	900 sq. ft.
Groundcover Area	880 sq. ft.
July Water Budget	5,800 sq. ft.
Annual Water Budget	26,800 gal.

